



```
var c=function(b){this.element-a(b)};...  
if(d||(d=b.attr("href"),d=d&&...  
g=a.Event("show.bs...  
f=a.Event("hide.bs.tab",{relatedTarget:b[0]}),g=a.Event("show.bs...  
this.activate(b.closest("li"),c),this.a...  
c.prototype...  
[data-toggle="tab"...  
b.removeClass("active").end().find('[data-toggle="tab"...  
b.addClass("in")):b.removeC...  
[data-toggle="tab"]').attr("aria-expanded",!0),e&&e()}va...  
g.length&&h?g.one("bsTransition...  
a.fn.tab=b,a.fn.tab.Constructor=c,a.fn.tab.noCon...  
[data-toggle="ta...  
function b(b){return this.each(function(){var d=a(thi...  
var d=a(thi...  
a.extend({...  
on("click.bs.affi...  
VERSION= 3.3.7",...  
return null!=c?!(e+this.unpin<=f.top)&&"bott...  
"bottom"==this.affixed)return null!=d&&i+j>=a-d&&"bottom"},c.prototype.getPinne...  
).addClass("affix");var a=this.$target.scrollTop()...  
function(){setTimeout(...  
nt.height()
```

# COSYS On Premise

In-house solution - server installation





# COSYS On Premise

- Counterpart for use as Software as a Service (SaaS) in the COSYS Cloud
- Data communication between mobile client and back office system
- automatic data transfer to ERP/customer system possible
- Central data management with post-processing and archiving
- Rights management, multilingualism, system monitoring (via COSYS WebDesk)

# Commissioning of COSYS On Premise solutions

## Assignment and Requirement catalogs

You buy/rent COSYS software to operate under your own responsibility in your own data center or on rented third-party data center servers (on premises). In the case of more complex installations, the first step is to define the software processes via a requirements and specifications document and functions elaborated.

## Installation

For commissioning and installation of the COSYS Backend components, you, as the customer/licensee, provide a server and send COSYS the corresponding access data.

## Training & Handover

After the installation of the test and/or production system, training and handover to your in-house IT/service provider can take place.

## Service & Support (long-term support)

Long-term support of the system and service and support by COSYS - depending on the agreed service contract - secure the investment.

## COSYS On Premise Backend Components:

- COSYS WebService: Web service for data communication between server and client
- COSYS WebDesk: central control element, in the form of a web-based administration and post-processing software for data visualization and management
- Interface modules
- preconfigured web browser (Mozilla Firefox)
- Application Server

# Your advantages of COSYS On Premise

## Advantages:

- Software operation in customer's own responsibility on (own or rented) hardware
- Complete control over your data and processes
- entire IT infrastructure in customer's own hands
- Integration in customer's own infrastructure
- local storage of data, even without Internet (www)

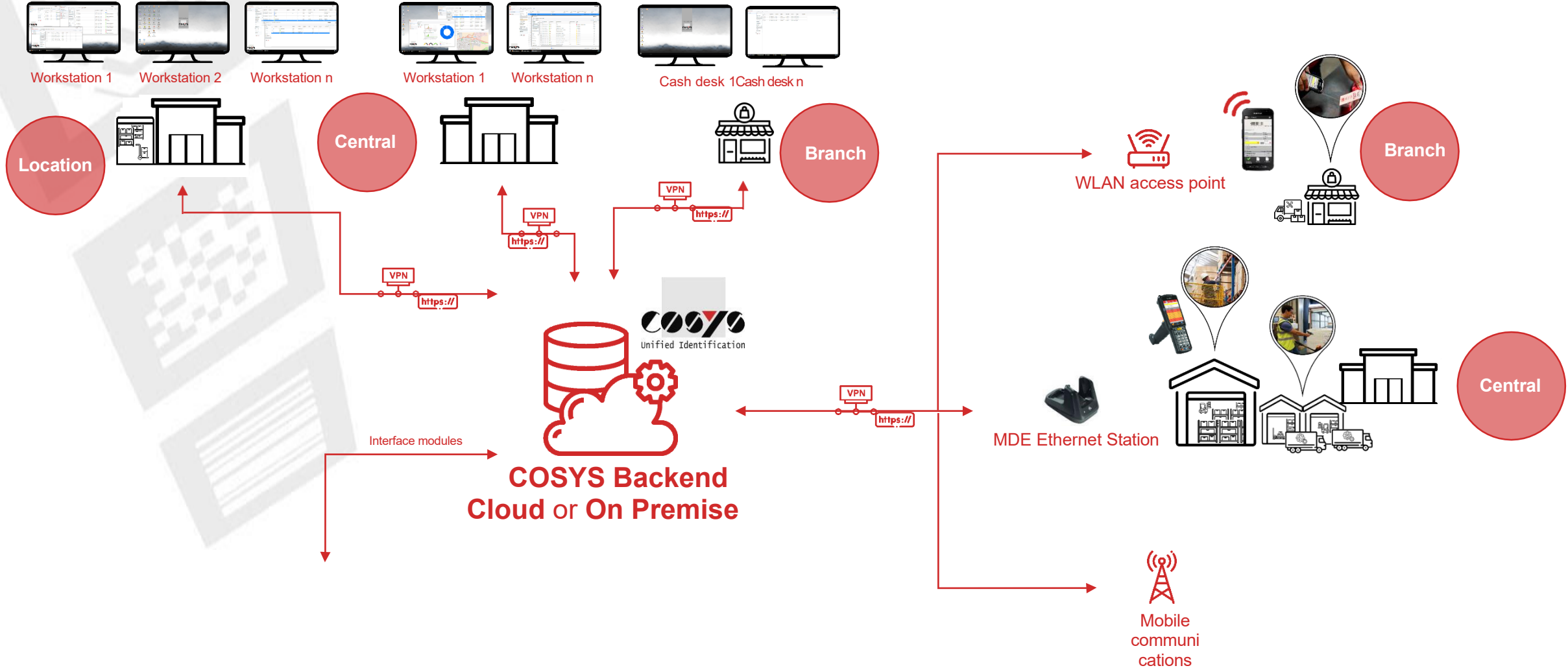
## Disadvantages that speak for COSYS Cloud:

- higher customer-specific effort (installation effort, provision of server, maintenance and operation responsibility)
- Hardware acquisition & operation
- Updates are not automatic
- Ties up resources within the customer's own IT and within the customer's own infrastructure
- Access on the move usually complicated and slow



# Data transmission

between the COSYS components

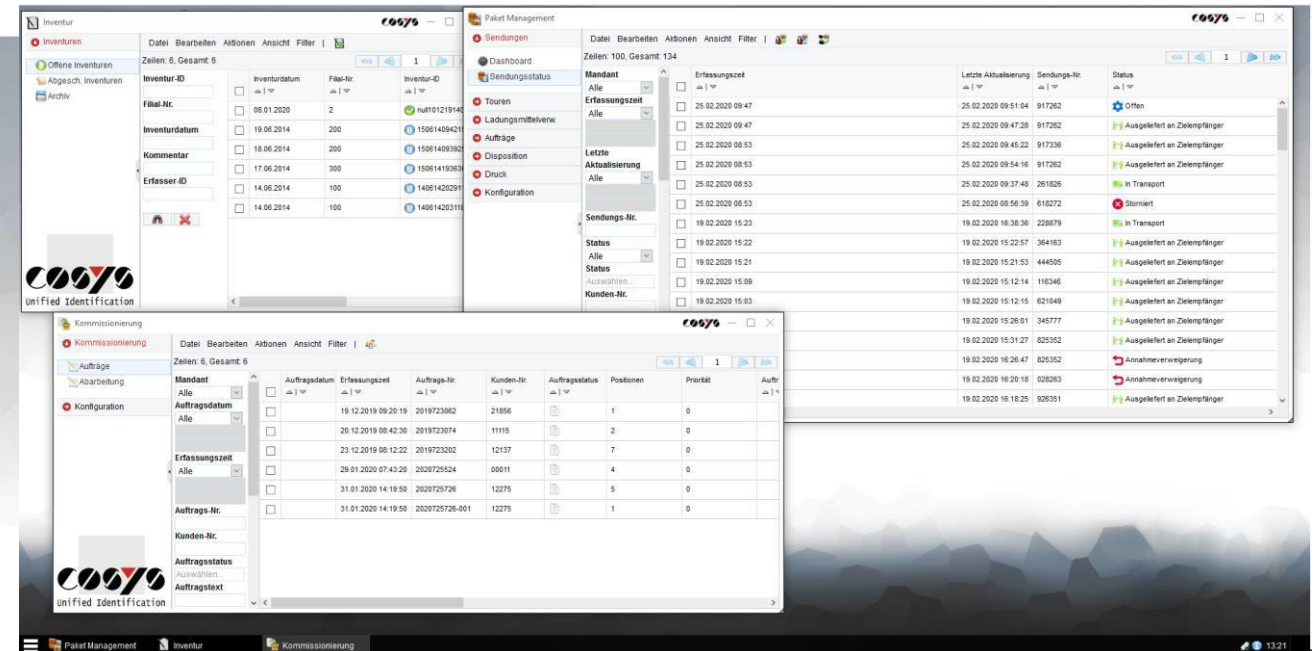




# COSYS WebDesk

Application software, part of the COSYS backend

- central control element of COSYS solutions in the form of administration and post-processing software with overarching and solution-specific modules
- offers e.g.: Administration of users, groups, roles and rights , overview and management of your master and transaction data, Device management, dashboards and further evaluation options



# Overview of possible interfaces

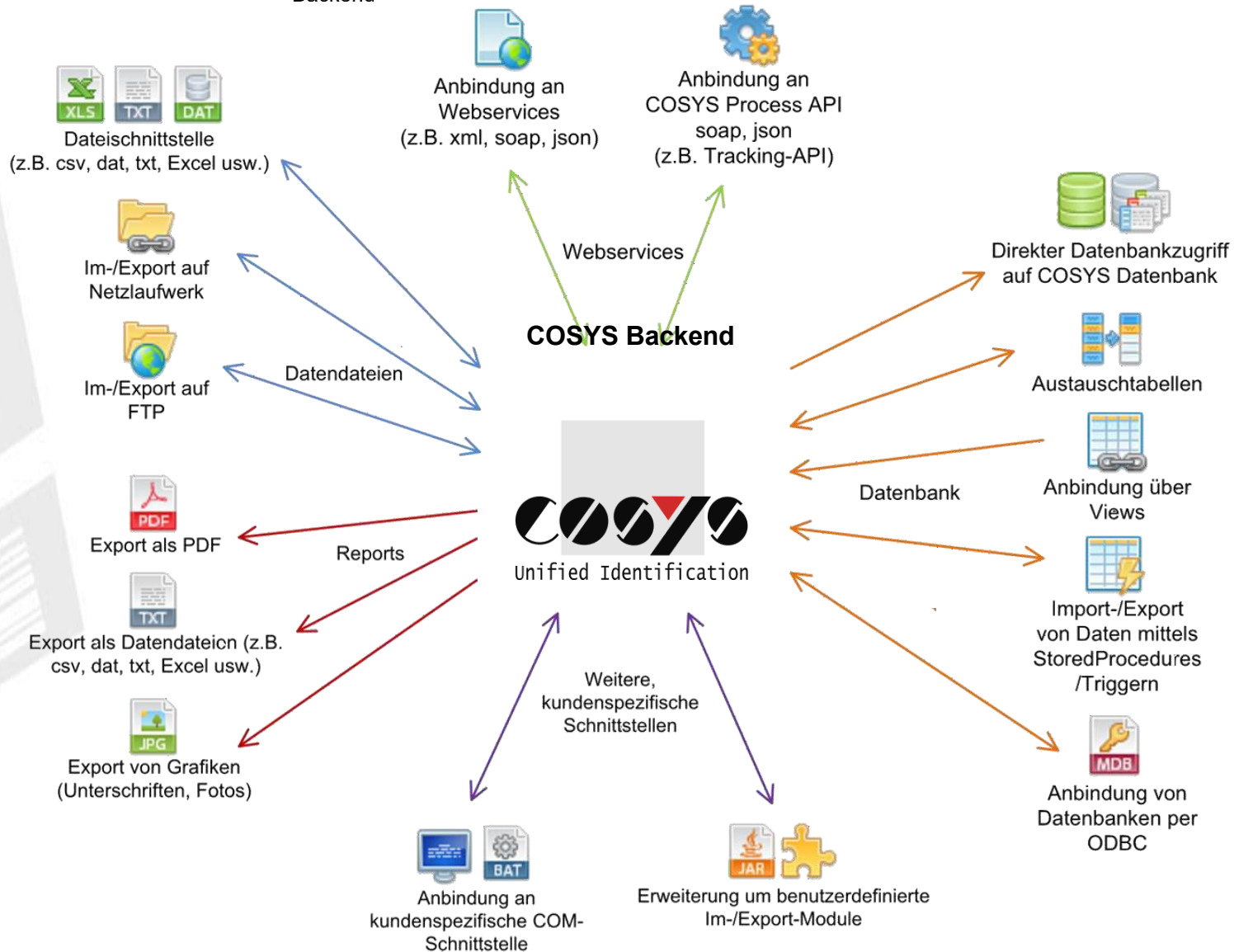
## Connection of the COSYS backend to other systems

Die COSYS Process API bietet definierte Funktionen für das Schreiben und Lesen von Daten in und aus dem COSYS Backend

Je nach Bedarf können die hier aufgeführten Schnittstellenarten miteinander kombiniert werden

Neben der Verwendung von durch COSYS vorgegebenen Formaten, können Import- und Exportformate sowie der Inhalt von Datendateien frei definiert werden

Es kann auf durch COSYS bereitgestellte Standardformate und Reports zurückgegriffen werden, diese können jedoch auch um kundenspezifische Anforderungen und Wünsche erweitert werden



Die Anbindung an bestimmte Views oder Austausch Tabellen kann je nach Bedarf definiert werden

Die Anbindung an unterschiedliche Datenbanken ist möglich (z.B. MSSql, MySQL, Postgres, Oracle usw.)



Your contact person:

Cosys Ident GmbH  
Am Kronsberg 1  
31188 Holle

Tel.: +49 5062 900 0

Fax: +49 5062 900 30

Email: [vertrieb@cosys.de](mailto:vertrieb@cosys.de)

[www.cosys.de](http://www.cosys.de)

